

COMPANY PROFILE



Sydney Studio

a University, Union and Schools Club
25 Bent Street Sydney, NSW 2000 Australia
p +61 417 278 267

Southern Highlands Studio

a School of Arts
471 Argyle Street, Moss Vale NSW 2577
p +61 2 4869 4240

ABN: 25001055205
contact@nicholasbray.net.au
www.nicholasbray.net.au

Nicholas Bray
Landscapes 



Company Profile

With 25 years experience in landscape architecture, horticulture and environmental planning, Nicholas Bray Landscapes brings a vital mix of expertise to your garden design or landscape project.

Principal Nicholas Bray studied landscape architecture in Australia and Canada and horticulture at the Royal Horticultural Society's garden at Wisley in the UK. He has also worked at the Hanbury Botanical Gardens in La Mortola, Italy and completed projects in Spain, UK, Singapore and Canada. Hanbury Botanical Gardens La Mortola, Italy & Wisley, UK.

Working efficiently on both public and private sector projects, the team at Nicholas Bray Landscapes specialise in fast turnaround of landscape plans for development application and construction certificate approval by council.

Our project and contract management experience working in multidisciplinary teams demonstrates an ability to manage project budgets and deliver results within tight time frames.

Innovative Landscape Design

Our domestic and commercial designs are innovative, practical and sustainable site-specific solutions which creatively balance the built and natural environments.

Plans On Time

The team at Nicholas Bray Landscapes work efficiently on both public and private sector projects, specialising in quick turnaround of landscape plans for development application and construction certificate approval by council.

Within Budget

With 25 years experience in landscape architecture, and environmental planning, Nicholas Bray Landscapes brings a vital mix of expertise to your landscape project.

About Nicholas Bray Landscapes

We offer a range of services from site consultation, landscape design, construction documentation, photo montage perspectives, council approval management, landscaping project management, environmental planning and maintenance schedules.

Servicing Australia and South East Asia



‘Nicholas Bray Landscapes deliver beautiful gardens that people want to live in’



Projects

Country Gardens:

Nicholas Bray Landscapes specialises in creating these beautiful sanctuaries within larger landscapes.

We can link exotic gardens and small-scale courtyards to their rural surroundings in a way that is harmonious and considerate of the natural environment.

Our country garden designs are also guided by sensitivity to the existing mature gardens. We skilfully undertake garden improvements within established gardens.

The secret to our success is our holistic approach. Nicholas Bray Landscapes' through knowledge of horticulture, arboriculture and landscape design brings functionality and flair to country gardens.

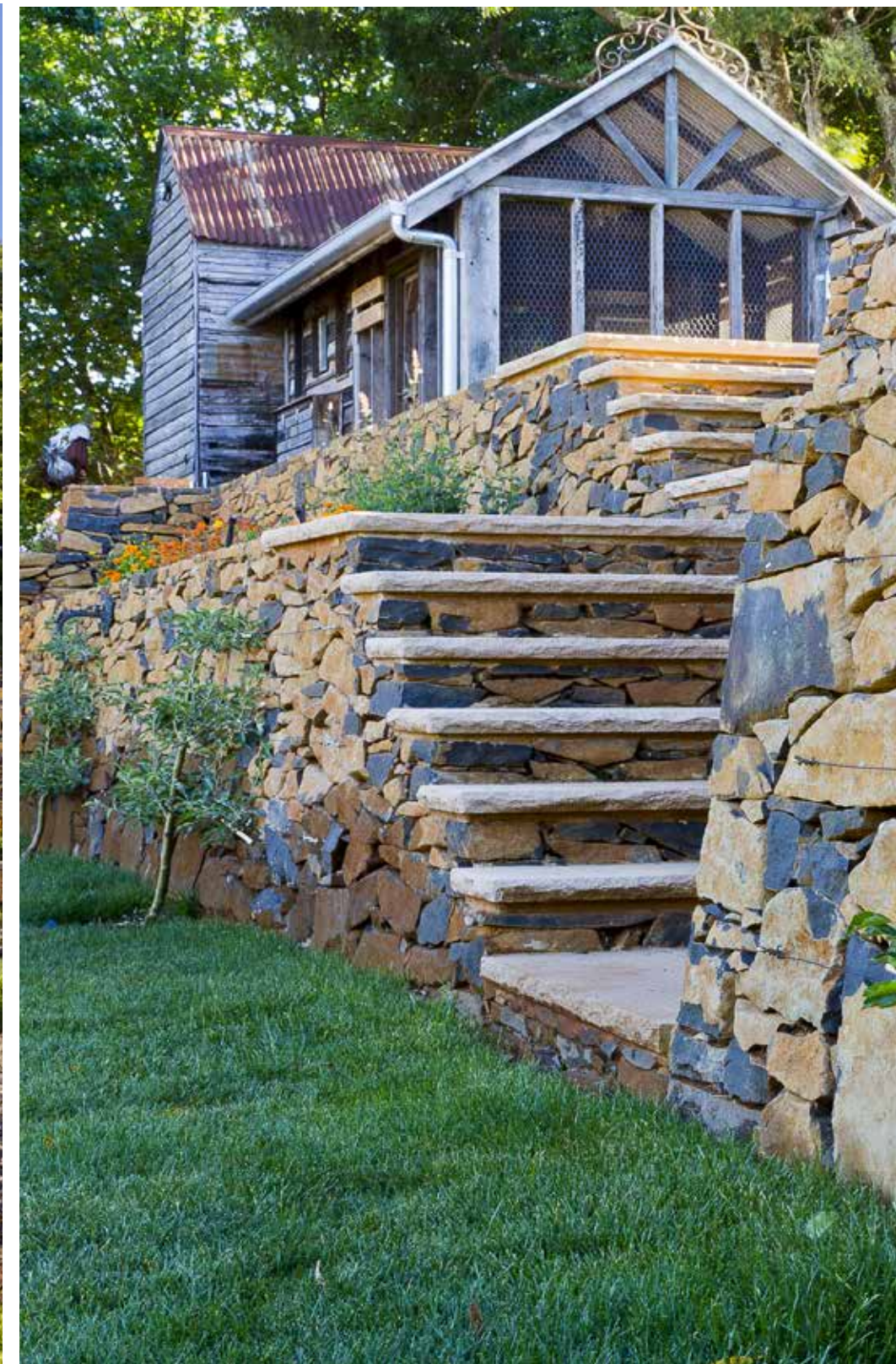
We specialise in cool climate gardens and can also develop microclimates for optimum growing conditions.



Projects

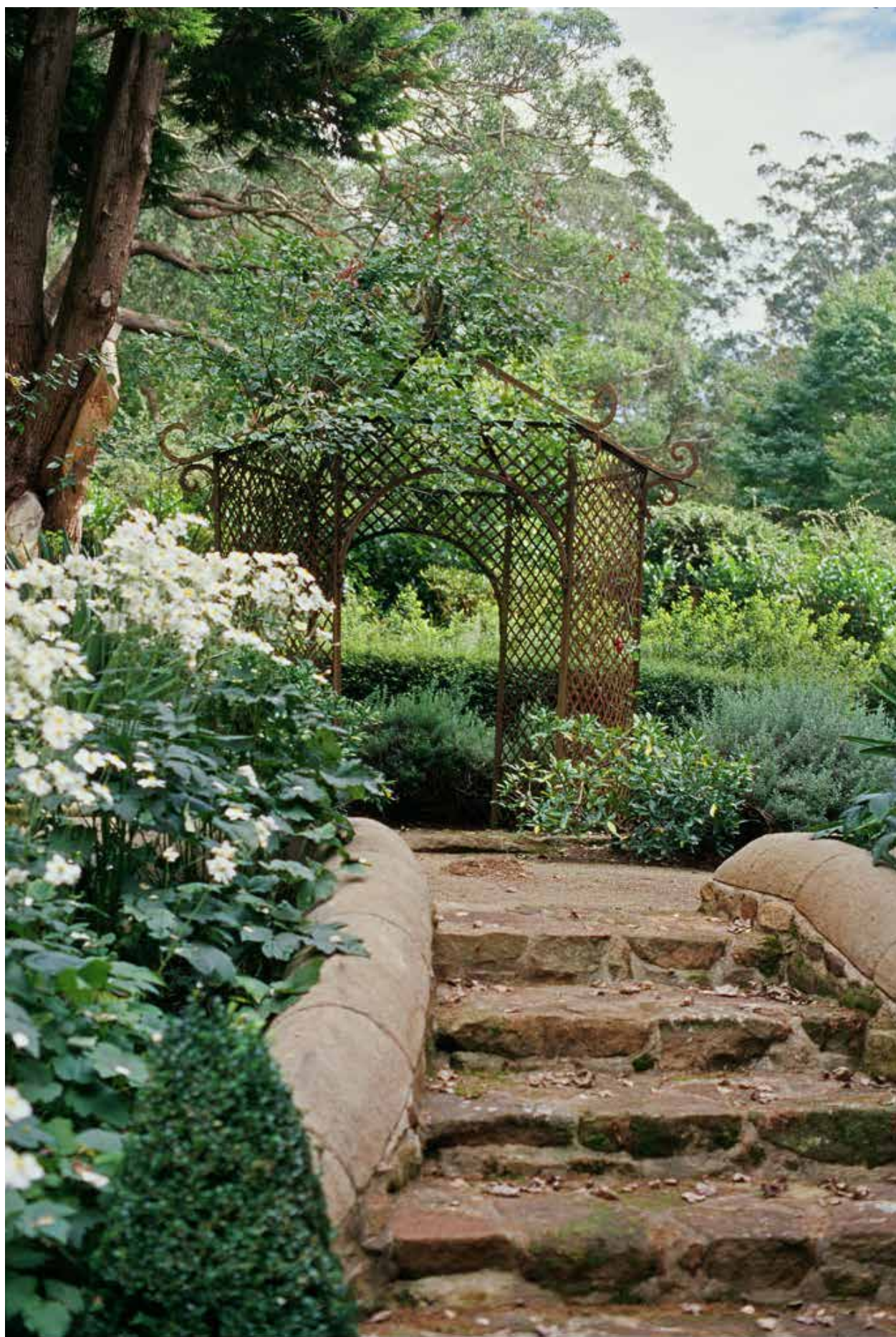
Country Gardens:

Nicholas Bray Landscapes specialises in creating these beautiful sanctuaries within larger landscapes. We can link exotic gardens and small-scale courtyards to their rural surroundings in a way that is harmonious and considerate of the natural environment.



Pepper Tree Farm
Southern Highlands





Projects

Contemporary Landscapes

Nicholas Bray Landscapes brings imaginative flair to modern garden settings. We also know the beauty of simplicity.

Our designs are thought provoking and incorporate sculptural form. We draw from the expertise of specialist contractors and artisans to craft inspiring spaces. Bringing a variety of forms, colours and structures to contemporary contexts, we create gardens that are unique and sustainable.

We believe landscape design is about treating a site as art. It's about balancing hard and soft surfaces, the natural and built environments, interiors and exteriors. Nicholas Bray Landscapes understands the critical link between design and building. We create synergy between architecture and the environment, to suit the site and delight the senses.











Projects

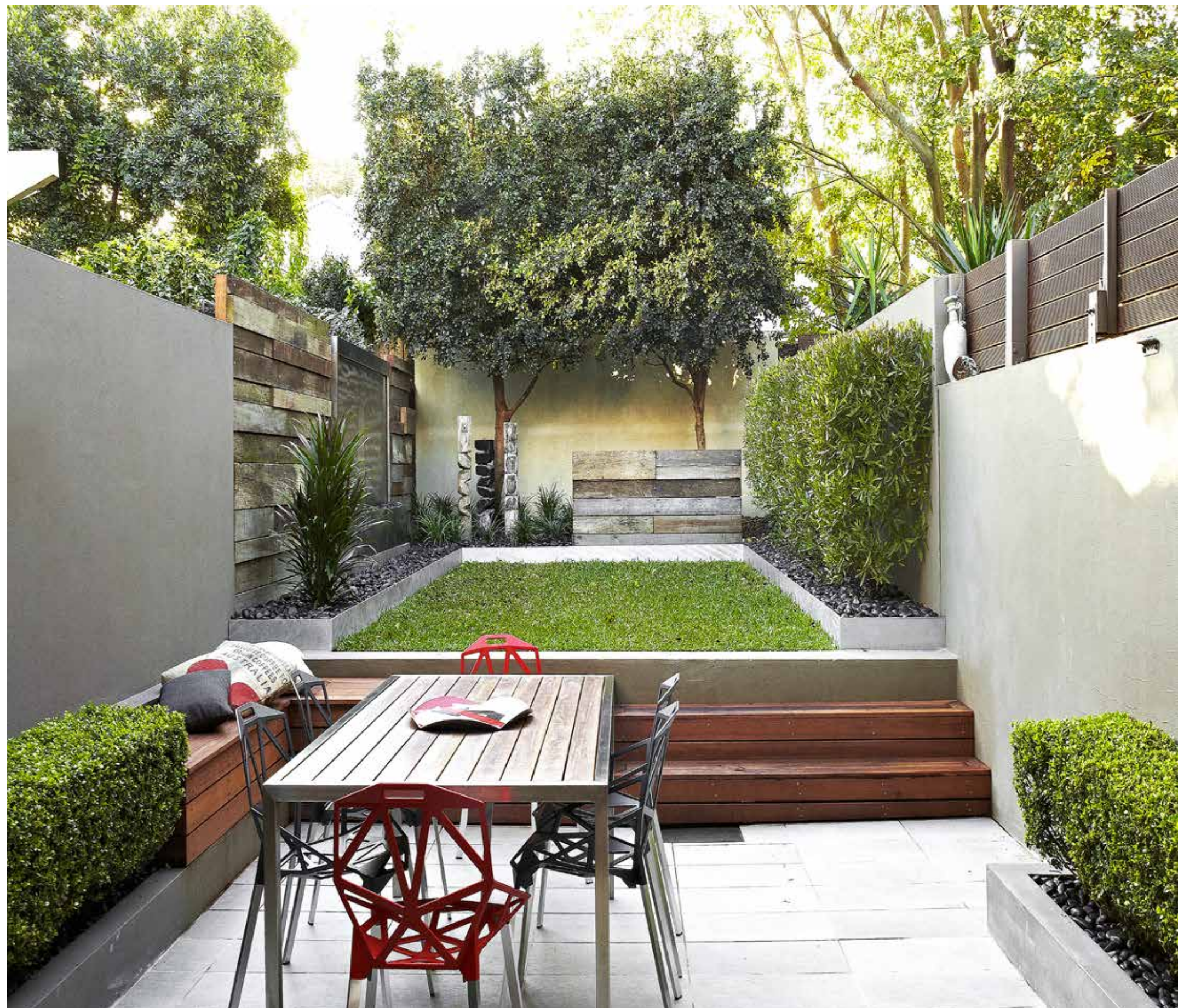
Urban Gardens

Landscape design at a variety of scales contained within the urban context; small rooftop and courtyard gardens to large waterfront gardens. Nicholas Bray Landscapes selection and use of stonemasonry, paving, steel, water, timber and sculpture elements ensure innovative city garden design solutions.





Easton Street Courtyard
Rozelle





Olola Avenue
Vaucluse







Projects

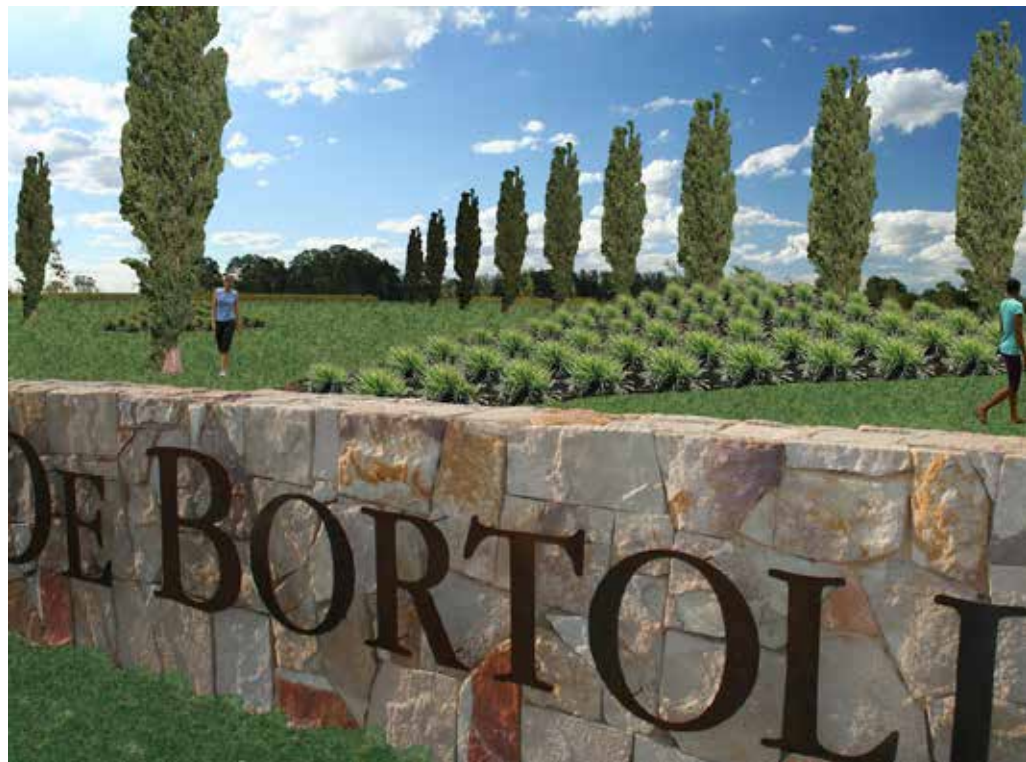
Commercial & Public

Nicholas Bray Landscapes creates multiple-use spaces that mesh built and natural environments for commercial contexts.

Sensitive design produces developments that minimise environmental impacts and project costs, while adding value. We add a high finish to commercial developments, helping your capital investment realise its full potential.

And we continue to add value. Our designs deliver long term, low maintenance landscapes to keep ongoing costs to a minimum. Nicholas Bray Landscapes understands the importance of local Council requirements and Australian Standards.

Our portfolio of commercial work includes schools, subdivisions, aged care facilities, industrial and public space projects.



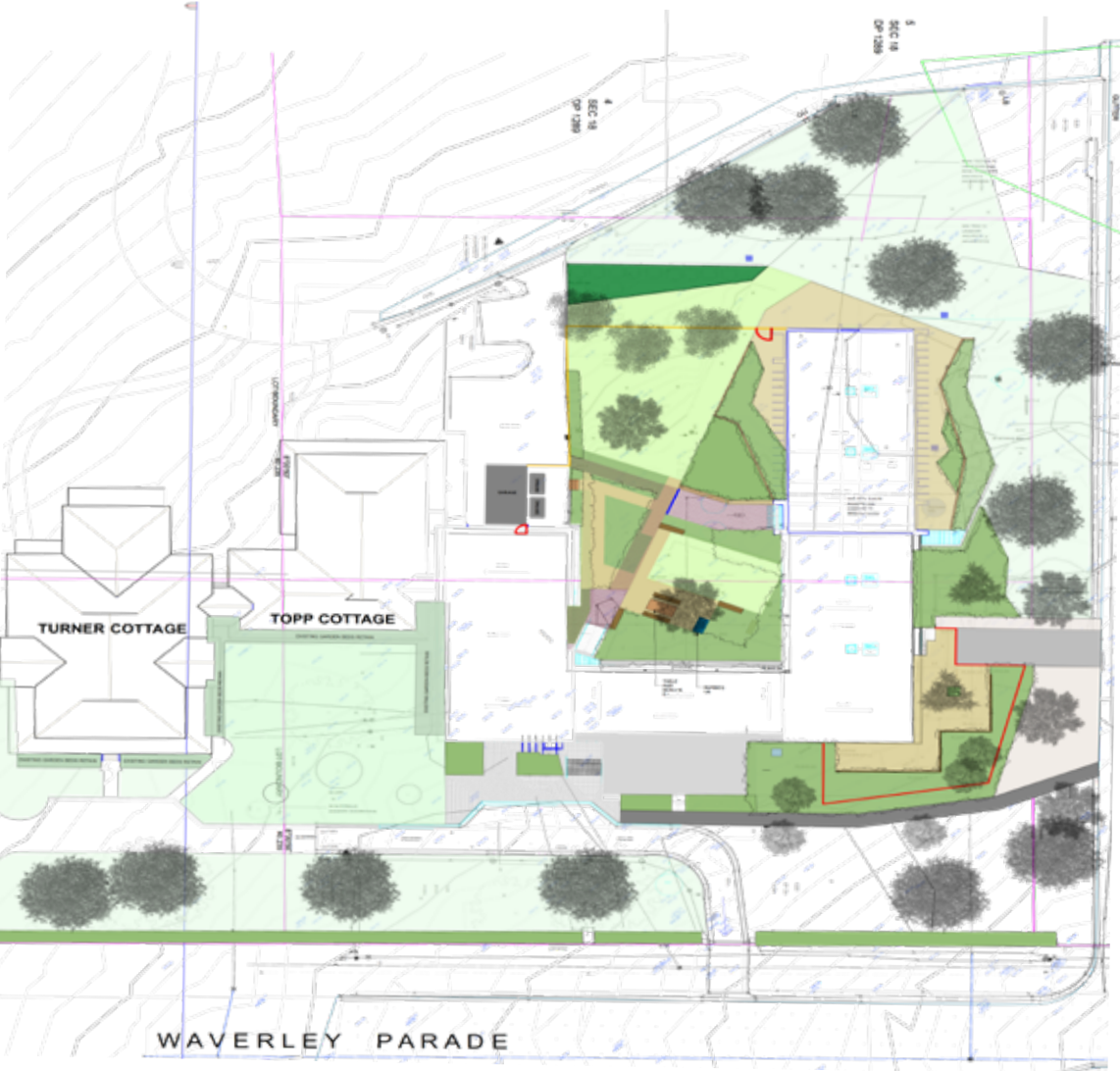


Residential Communities

Experienced landscape designers of urban and rural residential communities at a variety of densities. Services include working with developers to ensure compliance and timely processing of complex council approvals, master planning, traffic management, feasibility studies, project management and maintenance schedules.



Projects



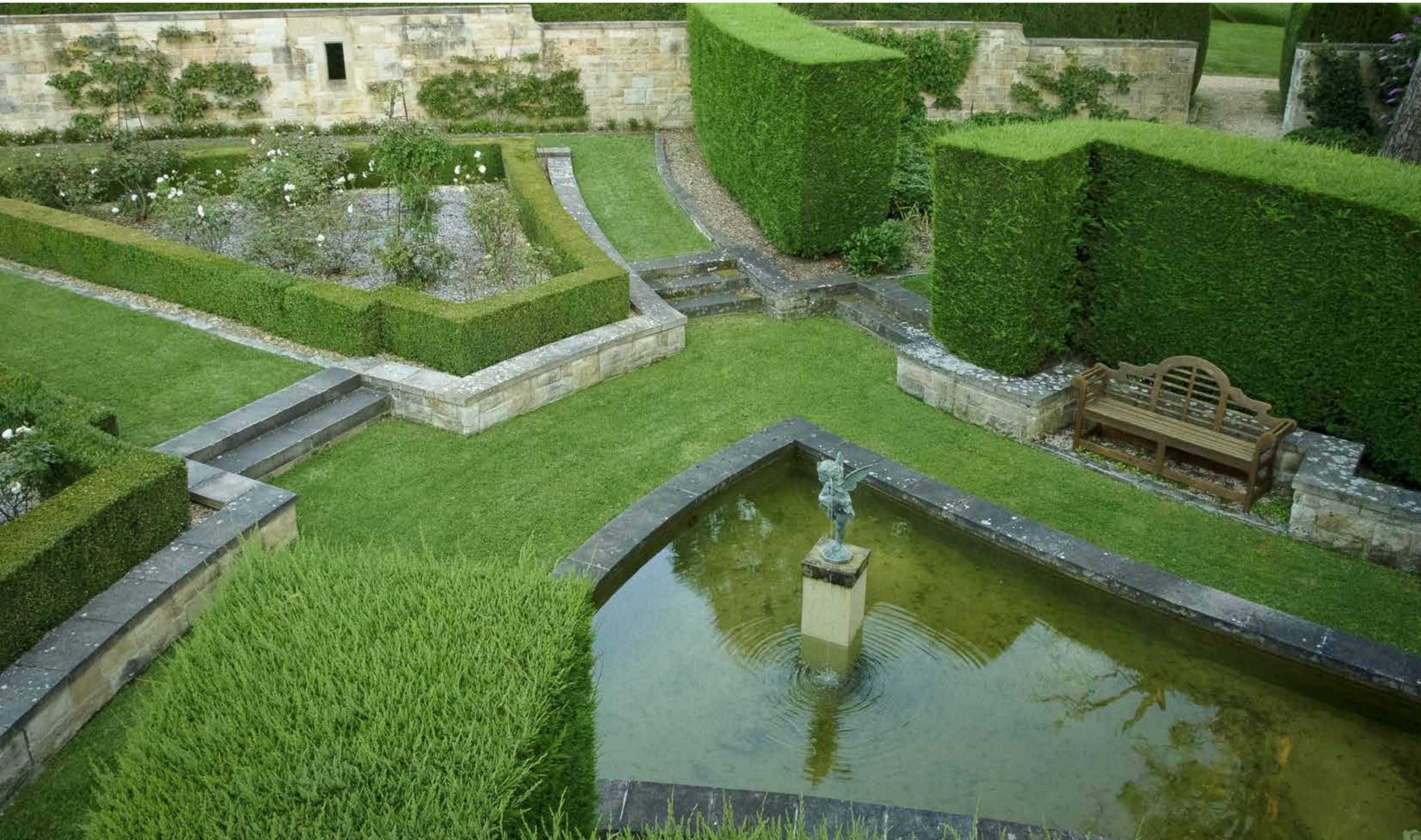
Frencham School
Mittagong

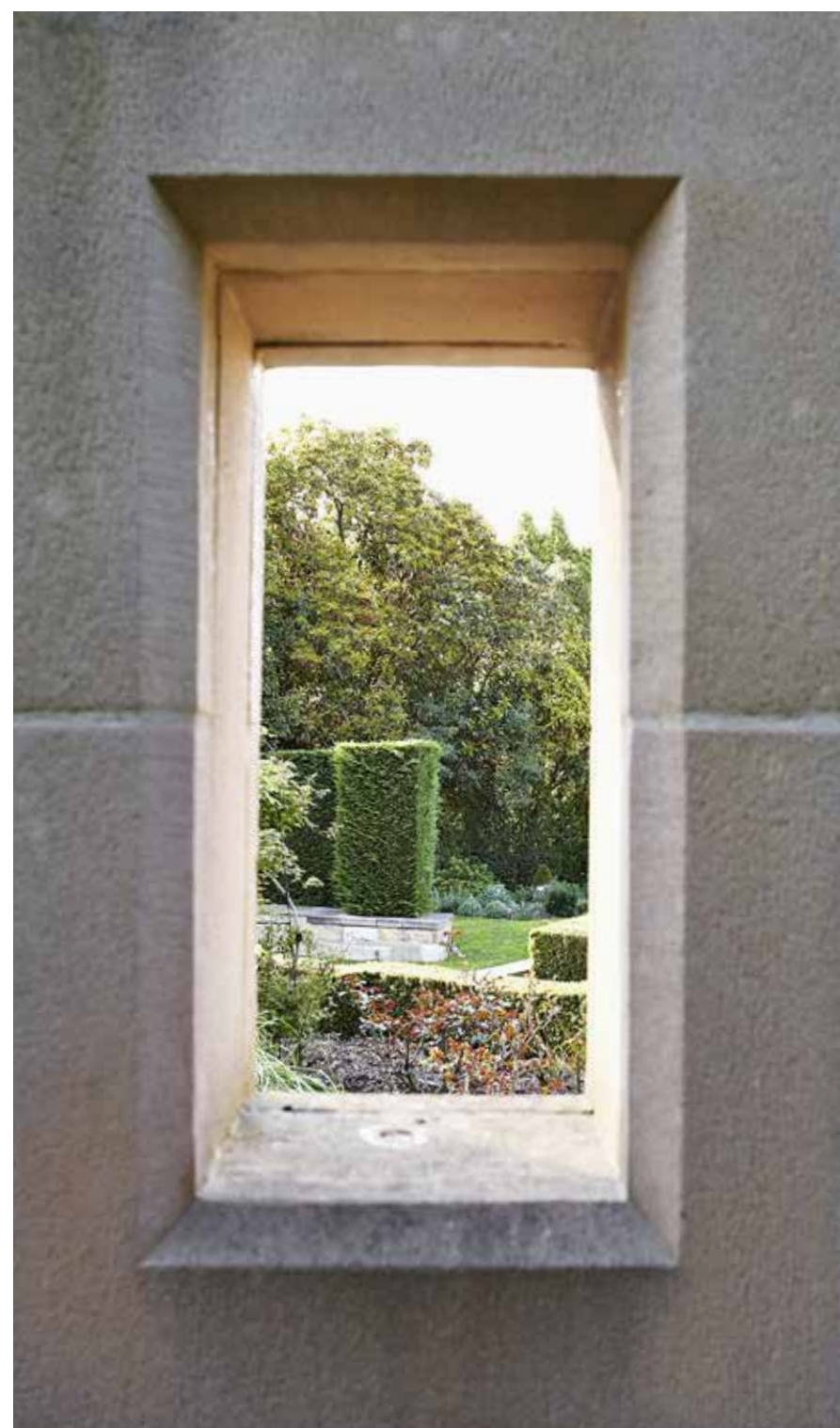


European Gardens

Garden designs inspired by the European tradition of timeless elegance and simplicity. French, Italian, English, Spanish and Mediterranean influenced style landscape plans and plant selection.







Medieval Walled Garden
Sutton Forest NSW

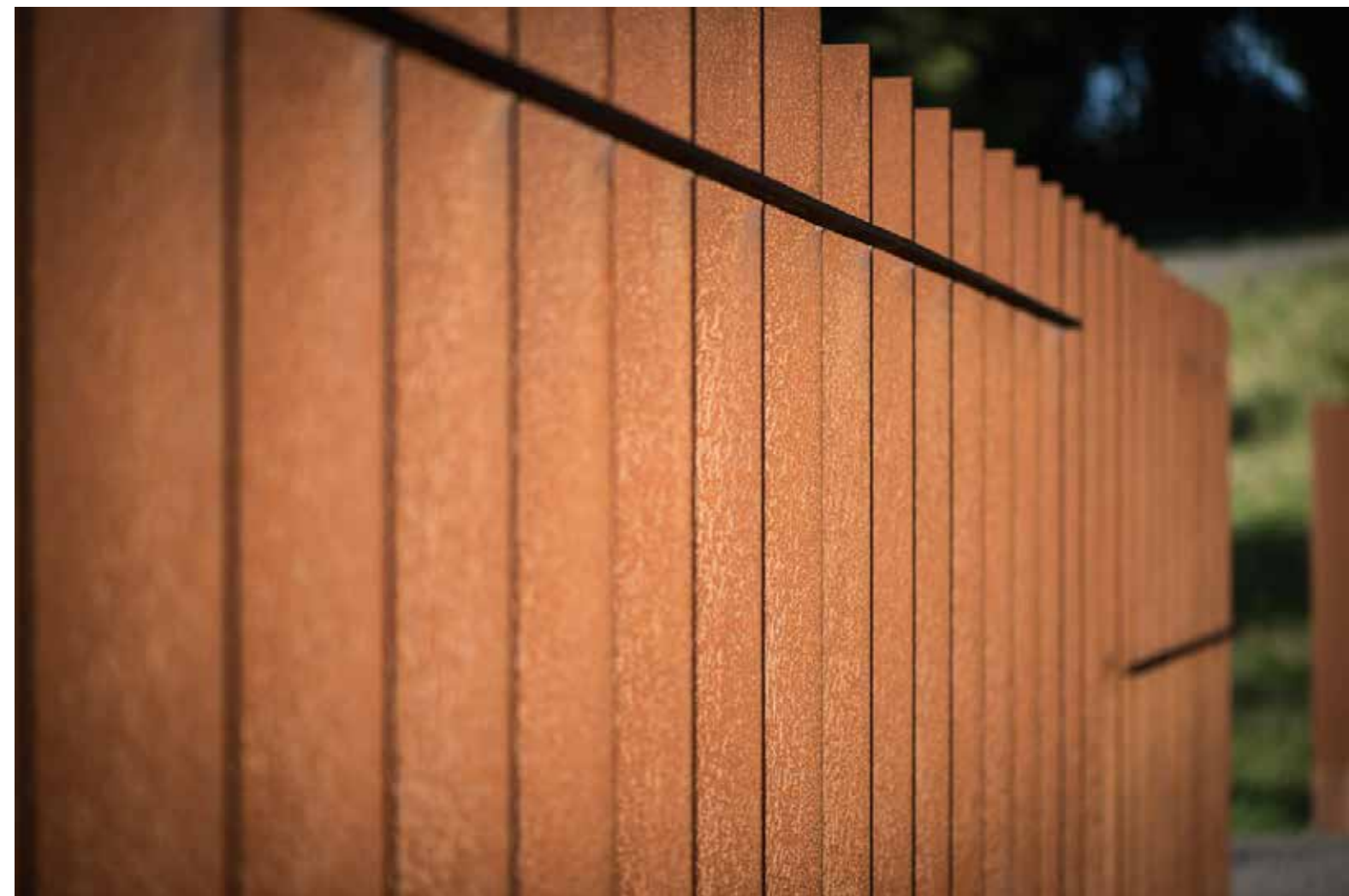






Aberdeen Residence





Projects

Mariners Complex Tuggerah NSW

A major development at the Mariners Headquarters.

Work includes landscaping and public art design around the buildings across the site. Initial design includes pool, office complex, travel lodge, childcare centre and accommodation facilities.

Budget \$1,5M

Client : Mariners FC Developments

Architect : MSK

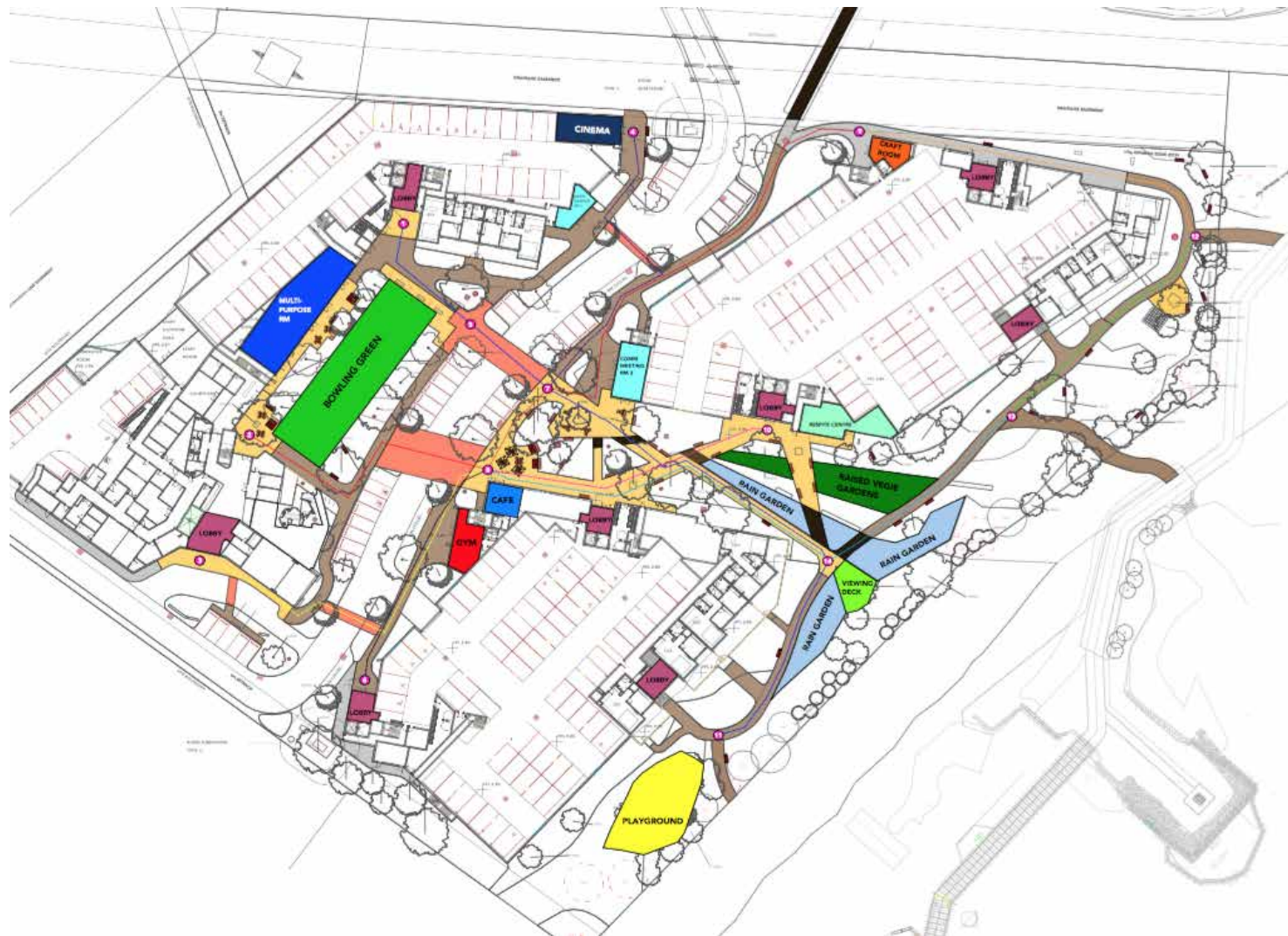
Completed : 2014 Ongoing





Projects

Woollooware Shores





Rebecca Memorial Garden
Kangaloon Road



Projects

Mereau Village

A collection of 19 units within a golf course in the Southern Highlands of NSW.

Frenched themed gardens combine a range of mediterranean style plantings, parterre garden, vegetable plots and orchards.

Budget \$400,000

Client : The Shipton Group

Architect : Coble Stephens

Completed : 2007



Projects

Aged Care : Anthem

A multi storey unit development within Retford Road Bowral.
Private balconies, planter boxes and internal courtyards provide
a relaxed landscape setting for residents.

Budget \$300,000

Client : The Blisset Group

Completed : 2003 - Ongoing

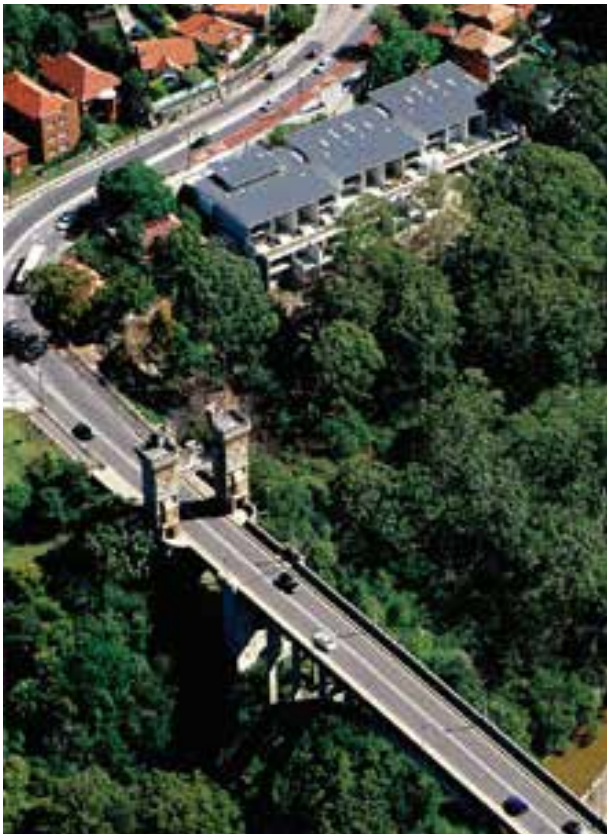


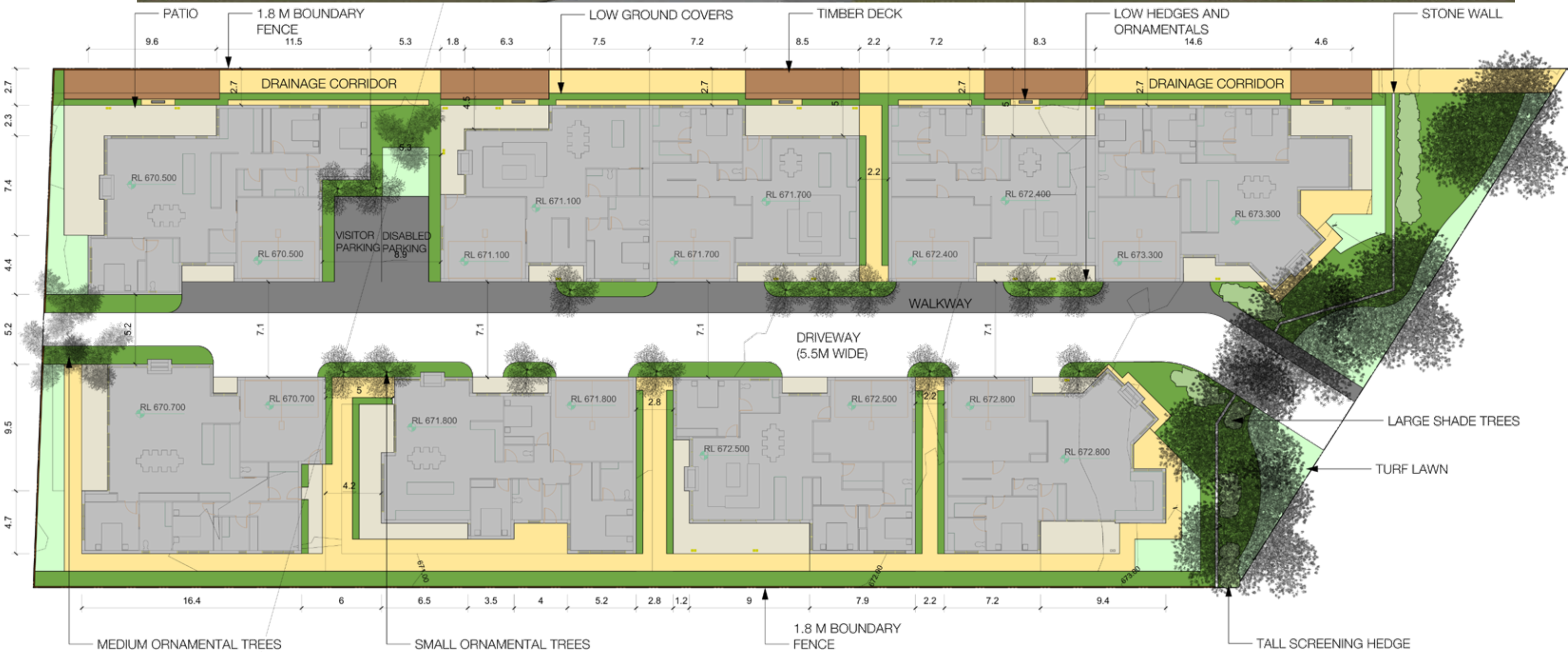
Projects

Residential: Canopy Miller Street Cammeray

A row of tree houses adjacent to Northbridge.
Intimate native courtyards surrounding dwellings with careful
planning around existing mature eucalyptus forest

Budget \$600,000
Client : CPC Energy
Architect : Alex Popov
Completed : 2005





Kangaloon Road
Aged Care Development

Projects

Mixed Use Apartment Development

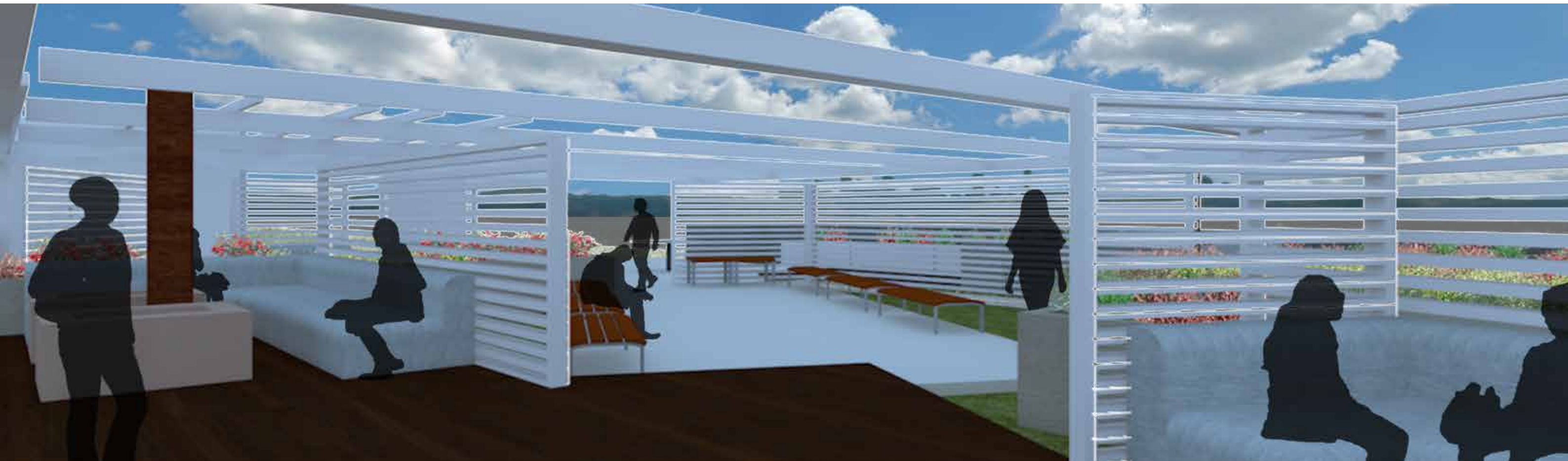
Port Macquarie NSW





Branksome Serviced
Apartments



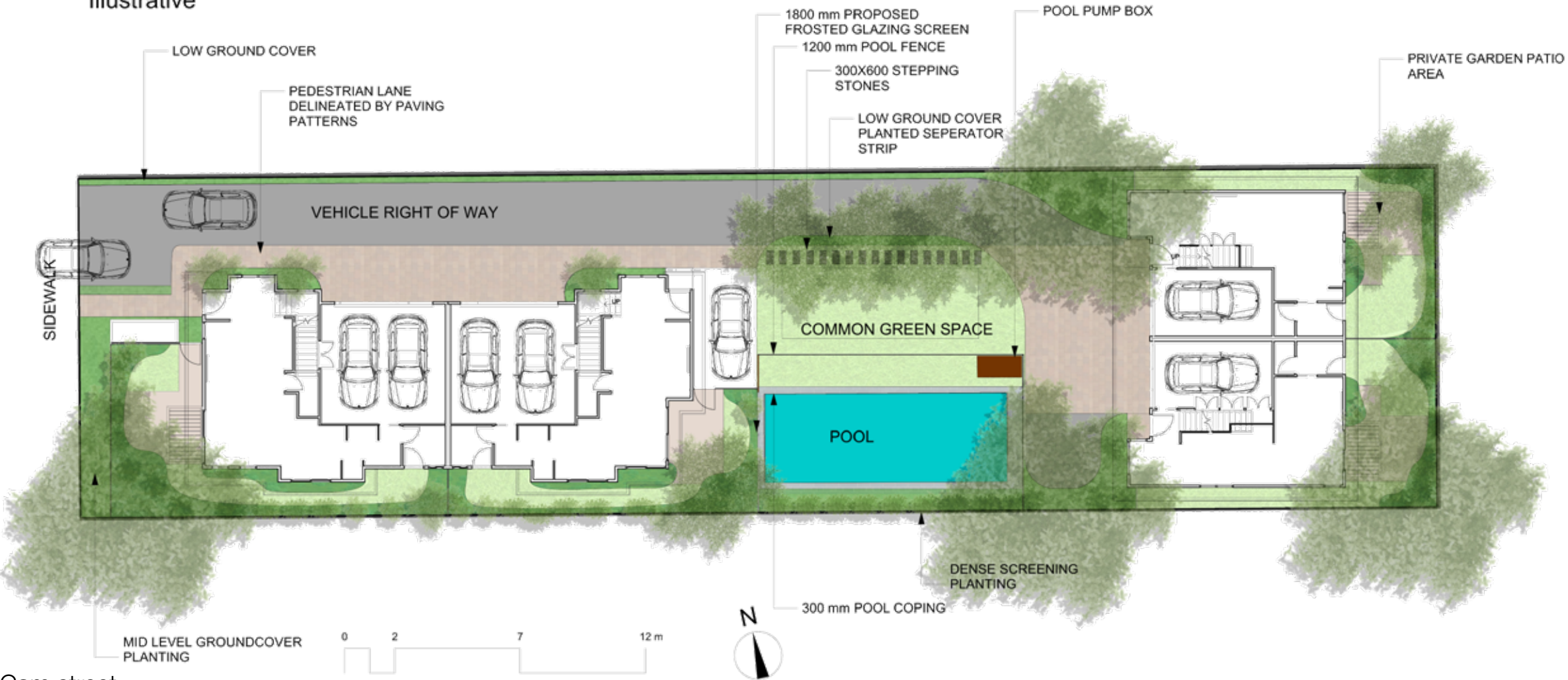


Branksome Apartment
Rooftop Terrace





Illustrative



Cam street
Apartments

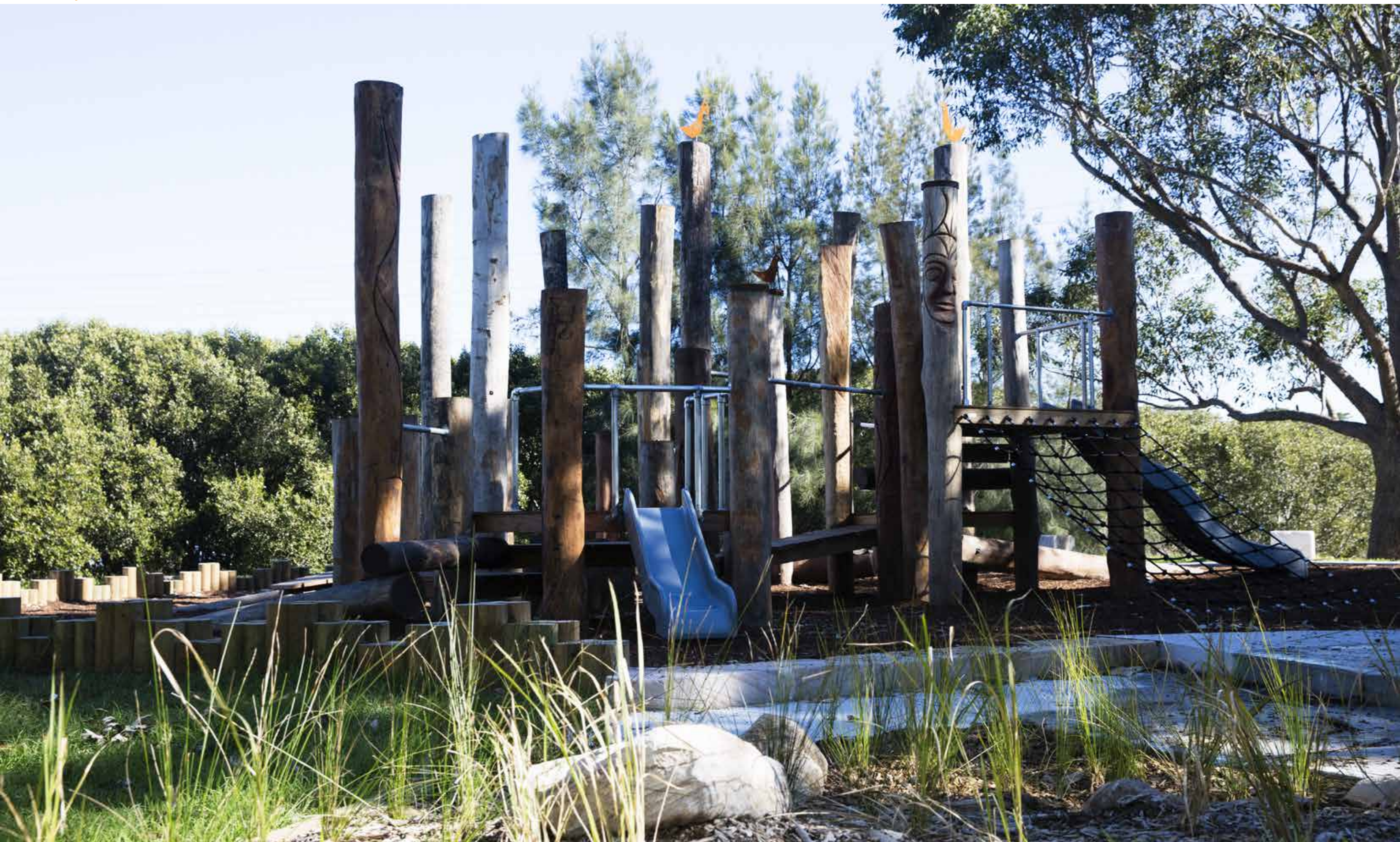




Cam street Apartments:
Rooftop Garden











Jordan Springs





Residential Housing Developments

Rex Headquarters Baxter Road Botany - 146 Apartments
Canopy 568 Miller Street North Sydney - 18 Townhouses
Belgrave Street 10-20 Cremorne- 26 Townhouses
Cavendish 365 Miller Street North Sydney- 13 Units
Anglesea Street 37-53 Bondi - 8 Townhouses
Hannaford Street Campbelltown - 7 Villas
Nevada Darling Point - High rise courtyards
Henley Brae Mittagong - 55 Villas
Anglewood Burradoo - 20 Cluster Homes
Rose Gardens Kangaloon Road Bowral - 14 Townhouses
Loftus Street Bowral - 15 Villas
Milton Park Country Houses Bowral Management Plan
St Henri Purcell Street Bowral - 5 Villas
Dormere Kangaloon Road Bowral - 19 Townhouses
Mereau Village Kirkham Road Moss Vale - 19 Villas
Tatton Park Suttor Road Moss Vale - 20 Cluster Homes
Kareela Tooth Street Bundanoon - 8 Villas
Erith Street Bundanoon- 76 Cluster Homes
Rosewood Nicholas Avenue Bundanoon - 10 Clusters
Branksome Serviced Apartments Warehouse and Offices
Dianella Street - Residential Development
'The Branksome' Serviced Apartments
Port Macquarie - William Street Apartments
5 Tilba Avenue - Townhouses
The Forge - Mittagong - Low Density Housing
Ryvita Site - Camperdown - Multi Storey
18 Cam Street Cambridge Park - 4 Town homes
Fulton Street Apartments - Penrith 29 units
50-52 William Street Port Macquarie 65 units

Regional Workforce Housing

Muswellbrook DA and Stage 2 CC - 265 Dwellings
Narrabri Stages 2-6 DA and CC - 650 Dwellings
Gulgong DA - 450 Dwellings
Boggabri DA - 1200 Dwellings
Werris Creek DA - 1500 Dwellings
Wandoan DA and CC - 2050 Dwellings
Calliope DA - 1800 Dwellings
Singleton DA - 1200 Dwellings

Aged Care Facilities / SEPP 5

Sanderson Park Bowral – 98 Cluster Homes
Shellharbour Senior Living Wattle Road Flinders- 48 Villas
Lawrence Hargraves Drive Wombarra – 5 Unit
Annesley Stage Bowral 2-15 Townhouses
Kenilworth Dementia Unit Bowral- 6 Units
Gibraltar Park Mittagong- 68 Cluster Homes
Anthem Retford Road Bowral- 100 Apartments
Coastal Waters Jervis Bay – 112 Townhouses
Kangaloon Road - 9 Units
Anthem Continuous Senior Care Facility - 45 Units
Oak Tree Retirement Village Moss Vale - 46 Units
Woollooware Shores Stage 6.1 Taren Point - 300 Units
Estia Crown Street Wollongong
Dapto St Lukes Anglican - New ILU and RAC

Commercial Developments

Mariners Headquarters Tuggerah
De Bortoli Vineyard Hunter Valley
De Bortoli Vineyard Griffith
Mittagong Marketplace Woolworths
Oxley Mall Coles Bowral
Mittagong Homemaker Centre
Iron Mines Bulky Goods Warehouse Mittagong
Forrest Inn and Apartments Canberra
Warehouse Facility Moore St Botany
Castle Gardens Northbridge
Bowral Childcare Centre Retford Road
Medical Centre Bowral Street Bowral
Sutton Forest Inn and Restaurant
Clarence Street Office Tower Moss Vale
Life City Medical Complex Berkeley
SCA Logistics Center
Jaycar Retail Center
616 Old North Road - Dural
Springwood Apartments - Springwood
6 Toorak Court - Port Macquarie
Northwest Business Center - Rouse Hill Sydney
4 Hereford Street Berkeley Vale
Knightsbridge Centre - Castle Hill
Bloomfield Site - Orange NSW



Public Open Space

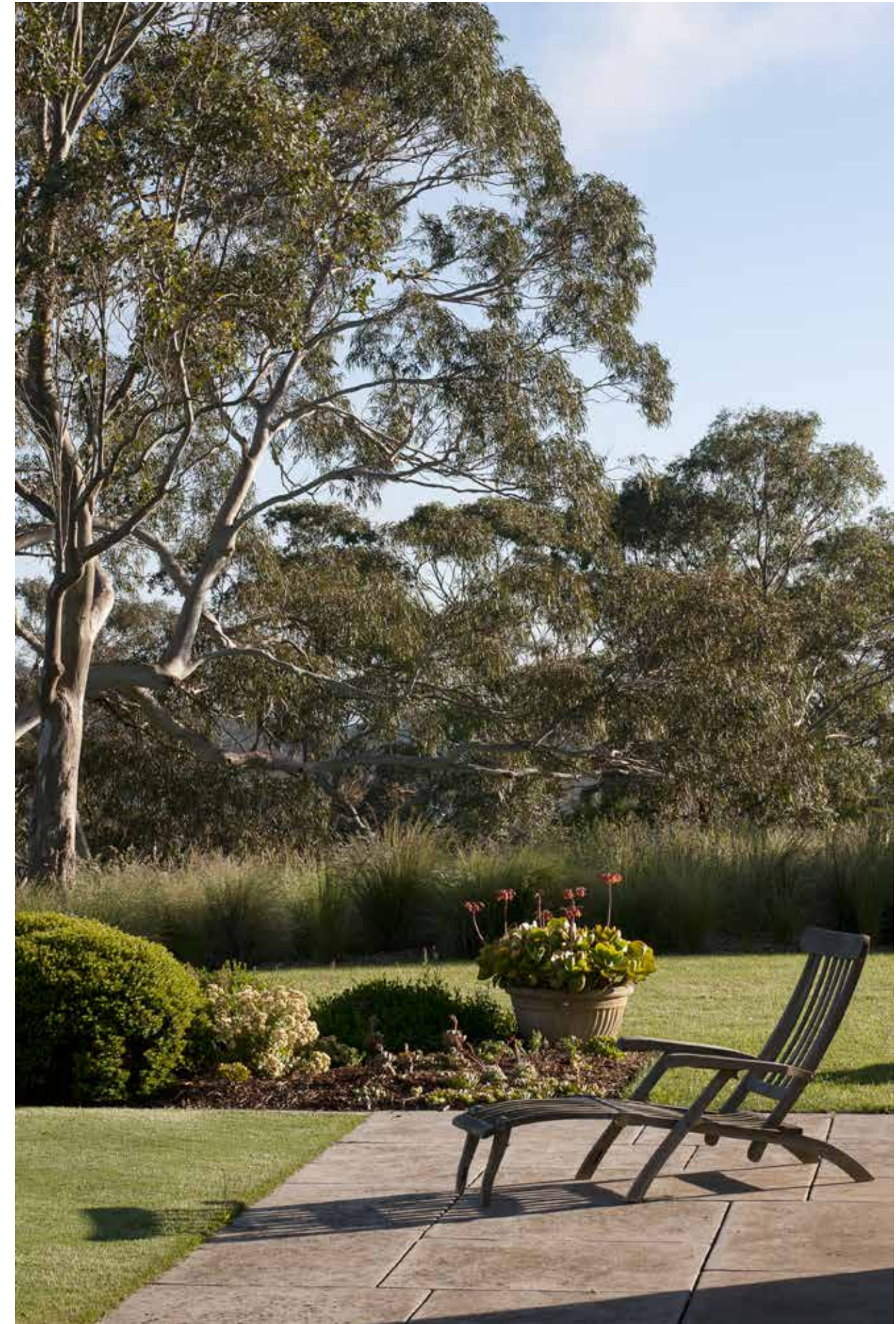
Glebe Park / Bradman Oval Bowral
Silverwater Public Domain Hume & Deakin Park
Auburn City Council Botanical Gardens Entrance
Auburn City Council Chambers
Duxford Street Paddington Woollahra Municipal Council
Richmond Villa Heritage Building Campbelltown
Lake Alexandria Master Plan Mittagong
Mittagong Marketplace Woolworths
Rotaract Community Park Young
Mittagong Visitor Information Centre
Macarthur Centre of Sustainable Living Mount Annan
National Australia Bank Plaza Picton
Tahmoor Shopping Village
Iris Street and Murrumburah Creek Park Harden
Lavis Playground Ryde
Melrose Park Playrounge Ryde City Council
Jordan Springs - Lend Lease Development
Harden - Light Horse Memorial
Bowral Station Street Upgrade

Religious and Spiritual Landscapes

BAP's Church Kemp's Creek
St Paul's Anglican Church Carlingford
Buddhist Temple Prajna Monastery Hurstville
Youth with a Mission Perth
Rebecca Susans Memorial Gardens
Sir William Tyree Private Cemetery
Life City Berkeley

University and School Landscape Master Plans

Windang Public School
Strathfield North Public School
Braddock Public School
Picton High School
Arranoubai Special School Frenchs Forest
Girraween Public School
Roseville Public School
Mt Riverview Public School
Granville Boys High
Frensham School Mittagong
Gib Gate Primary School Sensory Playground
Oxley College Bowral
Gib Gate Library Mittagong
Charles Sturt University Accommodation Orange
Charles Sturt University Accommodation Wagga Wagga
Child Care Developments Australia - 3 Whitfield Lane Renwick
159 Claisebrook Road - Youth With A Mission





Company Details:

Southern Highlands Studio :

School of Arts

471 Argyle Street Moss Vale NSW 2577 Australia

61 0248694290

61 0417278267

Sydney Meeting Centre :

Union, University and Schools Club

25 Bent Street Sydney NSW 2577 Australia

ABN 25001055205

contact@nicholasbray.net.au

www.nicholasbray.net.au

Insurances:

Registered Landscape Architect (RILA): 958

Australian Institute of Landscape Architects (AILA)

Professional Indemnity:

Jardine Loyd Thompson

Policy No.

\$1 million in any one claim

\$3 million in the aggregate

Public Liability:

CGU

Policy No. 15T 0257051

\$20 million

Workers Compensation:

Policy No. 20WOR9401577122